



.....promoting the conservation, protection, restoration and sustainability of our water-based resources.

SPRING 2017

LES CHENEUX WATERSHED COUNCIL

Volume 8 Number 1

2017 News and Plans



Highlighted in this issue:

- Inland Seas Schooner Sail
- Recycling
- Cedarville Harbor
- Government Island Hiking
- Frogfest
- Sewer Treatment Plant
- Non-native milfoil
- New non-native weed

Six grants from the Great Lakes Restoration Initiative (GLRI) have addressed LCI ecological issues in recent years. Please make time to post the enclosed card.

- New non-native weed
- Non-native phragmites
- Enbridge Line-5
- Little Brown Bat

Details on most topics on our website as shown below.

We now have both Endowed and Unendowed Funds with the Community Foundation (LCCF). In addition to your ability to contribute directly to our Watershed Council 501(c)3 account you also have the LCCF option to help us become "better endowed".

A sincere Thank You to all who support our projects!

www.lescheneauxwatershed.org

<https://www.facebook.com/pages/Les-Cheneaux-Watershed-Council/140334046002322>



The *Inland Seas*, a floating laboratory

By popular demand the schooner, *Inland Seas*, will again be in Hessel on July 10th and 11th. As last year, she will sail twice a day while providing a unique, educational and fun experience for children and adults. The ship's crew will provide a hands-on experience in water research opportunities at multiple education stations as well as have participants take part in ship handling skills. The event is sponsored by our Watershed Council and an activity of the Inland Seas Education Association (ISEA). Learn more about ISEA at www.schoolship.org. Ticket sales will begin in May.



LCWC and Clark Twp recently began efforts to reinstate collection of all recyclables at the local facility. Collaboration with other local recycling programs has begun.

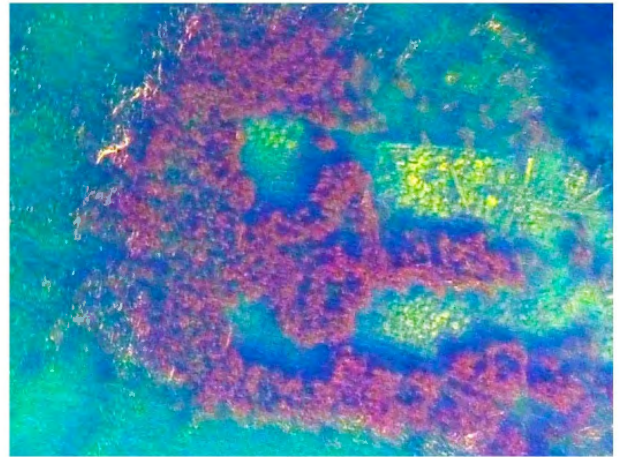
www.lescheneauxwatershed.org

LOCATE INVASIVES QUICKLY: Michigan Technological University (MTU) is using light reflectance to more rapidly and accurately identify Eurasian watermilfoil (EWM) growth. Their objective is to identify unique light reflectance “fingerprints” for invasive species such as EWM .

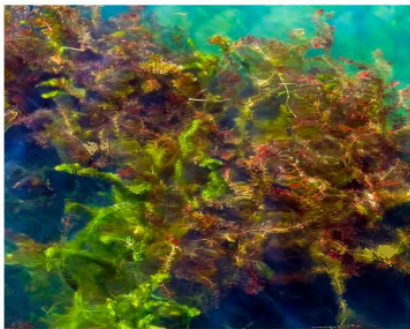


Above: MTU quadcopter landing after photographing EWM patch.

The EWM in this photo taken by a quadcopter appears burgundy in color whereas the yellow patterns are rocks remaining from an old crib dock. LCWC is a sub-contractor with MTU under a grant to help attain their goal.



Above: Invasive milfoil appears burgundy using MTU reflectance technology.



Left: Invasive milfoil interbreeds. As is the case with most invasive species, Eurasian watermilfoil (EWM) interbreeds with native species. The bright green in this photo is native Northern watermilfoil and the more drab brown-burgundy growth is EWM. It is not obvious from this image if the plants are simply growing together or if this is a single hybrid plant. It has been reported that hybrid milfoil forms are more aggressive in crowding out native aquatic plants than are the native forms such as Northern watermilfoil.



Disappearing milfoil: Eurasian watermilfoil (EWM) grew aggressively throughout LCI in 2011 and 2012. Sheppard and Cedarville Bays were two areas of the most dense growth. Quantified studies from 2013 through 2016 show that growth in these two bays has decreased 80% without any intentional management effort.

www.lescheneauxwatershed.org

← 2013

2016 →



NEW non-native water weed wants to come to our neighborhood.

Starry Stonewart (SSW) is actually a stalked form of algae meaning it has no vascular system to transport nutrients. Two native cousins of SSW are present in LCI in the form of *Nitella* and *Chara*.

Surveys by EnviroScience biologists have yet to find SSW during the past 4 years but it is something for all to be aware of. Both waterfront owners and those frequenting launch ramps can help monitor for this new non-native invader.

SSW is transported by migratory birds and on boat trailers. We cannot do much about the waterfowl but we sure can check trailers before they dip into our waters!

For more information, search the web for Starry Stonewart or *Nitellopsis obtusa*.





Cedarville Harbor expansion project takes form. Engineering drawings are in process and draft sketches are shown here. Contracts will soon go out for bids and construction is expected to begin this fall. Information packets will be mailed to LCI residents by early summer.
www.lescheneauxwatershed.org



Hike Government Island. Last June the U.S. Forest Service dedicated the Government Island trail system in memory of former board member, Mike Mahoney. LCWC helps maintain trails in cooperation with the Forest Service. Dan Reelitz is LCWC liaison.



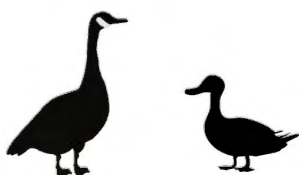
Right: Government Island Wildflower



Left: Frogfest is held annually the second Saturday in July with our primary interest being to engage the community, especially the young, to raise awareness of the rich natural legacy to be enjoyed right here in Les Cheneaux.

Frogfest is preceded by the Watershed Council Annual General Meeting held the Thursday following July 4th. This year the AGM is scheduled for July 6th.

The **Clark Township Sewer Treatment Plant (STP)** has reduced phosphorus, the most important aquatic weed growth nutrient, to record low levels. At this point, every 50 ducks plus every dozen Canadian geese in Cedarville Bay contribute as much phosphorus as is contained in the annual 50—60 million gallons of STP discharge. In the interest of water quality throughout the islands, please discourage attracting waterfowl.



Re-new your membership with the Les Cheneaux Watershed Council today!

We need your support to preserve the health of our waters!

Membership or Donation to the Les Cheneaux Watershed Council

\$15 _____ Basic Membership

\$25 _____ Spring Peeper

\$50 _____ Green Frog

\$75 _____ Tree Frog

\$100 _____ Leopard Frog

\$500 _____ Blue Heron

\$1,000 _____ Wetland

\$ _____ Water Guardian

Send check to: **LCWC, Box 578, Cedarville, MI 49719**

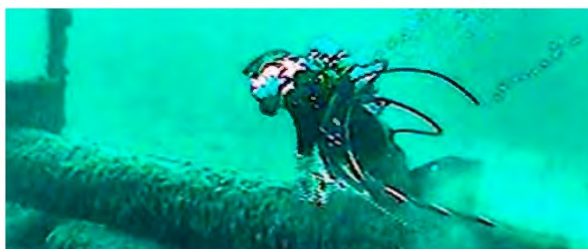
LES CHENEAUX WATERSHED COUNCIL
P.O. Box 578
CEDARVILLE, MICHIGAN 49719



**Starry Stonewort:
Newest non-native aquatic weed
challenge for the Great Lakes**

LES CHENEAUX WATERSHED COUNCIL NEWSLETTER

Non-native Phragmites infestations in LCI are down significantly thanks to help from CISMA (Three Shores Cooperative Invasive Species Management Area of Chippewa, Mackinac and Luce Counties). For each of the past six years CISMA has assisted LCWC in managing our non-native phragmites outgrowths. Thanks to CISMA, LCI is on a maintenance program whereby they help manage new patches that appear annually. Mike Stoll is the LCWC liaison to CISMA.



Enbridge Line-5 continues to transfer higher volumes of petroleum products at increased pressure since initial concerns about the integrity and safety of this pipeline crossing under the Straits of Mackinac came under question a few short years ago. The issue receives attention at the State, regional and national level but without resolution to date. This summer Tip of the Mitt Watershed Council will sponsor an educational meeting in St Ignace and LCWC will be a co-sponsor. www.lescheneauxwatershed.org

Little Brown Bats are the most common local bat species. Bat populations have been declining drastically across the USA in recent years due, primarily, to a fungal infection known as White Nose Syndrome. An informal 2016 survey indicated although LCI bat numbers were down, we do have a surviving population. Watch our website for details on another bat survey for the upcoming summer.

